

ALWAYS MAINTAIN A SAFE PEDESTRIAN PATHWAY!!

BE ALERT !! HIGH SPEED AND/OR HIGH VOLUME TRAFFIC AREA

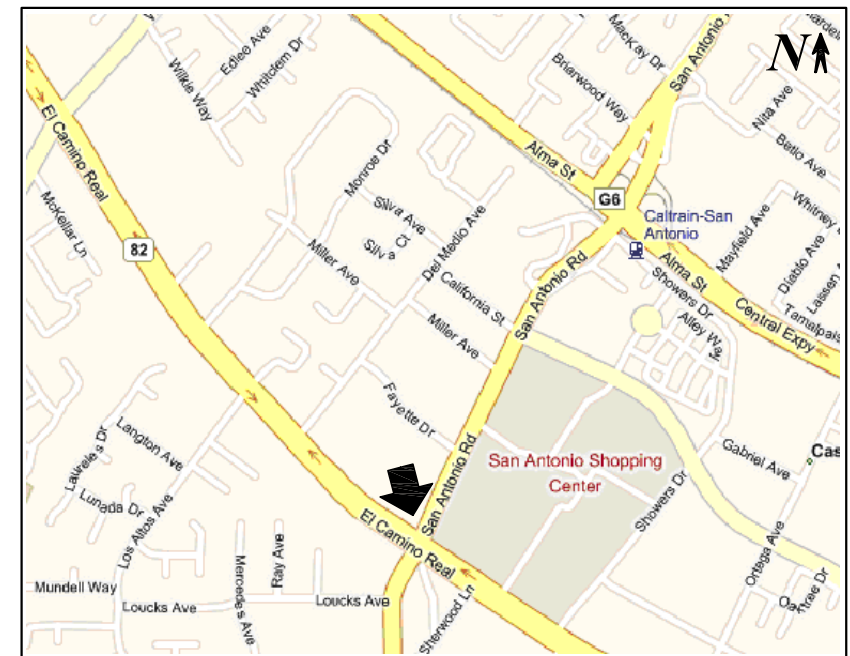
- LEGEND**
- TYPE II BARRICADE
 - CHANNELIZING DEVICE
 - TRAFFIC CONE WITH CLIP ON SIGN
 - SIGN WITH HIGH LEVEL WARNING DEVICE (FLAGTREE)
 - POST TEMPORARY NO PARKING SIGNS
 - SIGNALIZED INTERSECTION
 - ARROW PANEL (FLASHING ARROW)
 - FLAGMAN
 - WORK ZONE (ACTIVITY AREA) LIMITS
 - PAVEMENT MARKING
 - DIRECTION OF TRAFFIC (NOT PAVEMENT MARKING)
 - ADDRESS

TC SIGNS	
QTY	SIGN
2	FLASHING ARROW BOARD
2	G20-2, END ROAD WORK
4	M4-9b, PEDESTRIAN DETOUR
2	R9-11, SW CLSD-CROSS HERE
1	SW CLOSED
4	W20-1, ROAD WORK AHEAD
2	W4-2, MERGE SYMBOL

TAPER LENGTHS CALCULATED BY FORMULA FROM CA MUTCD TABLE 6C-4.
 40 M.P.H. OR LESS: $L=WS^2/60$
 40 M.P.H. OR MORE: $L=WS$
 L=TAPER LENGTH(FT)
 W= WIDTH OF OFFSET(FT) S= POSTED SPEED LIMIT

APPROACH SPEED (MPH)	MAXIMUM CHANNELIZER SPACING		
	TAPER (FT)	TANGENT (FT)	CONFLICT (FT)
20	21	42	10
25	26	53	13
30	32	63	15
35	37	74	18
40	42	84	20
45	48	95	23
50	53	106	25
OVER 50	74	148	35

VICINITY MAP

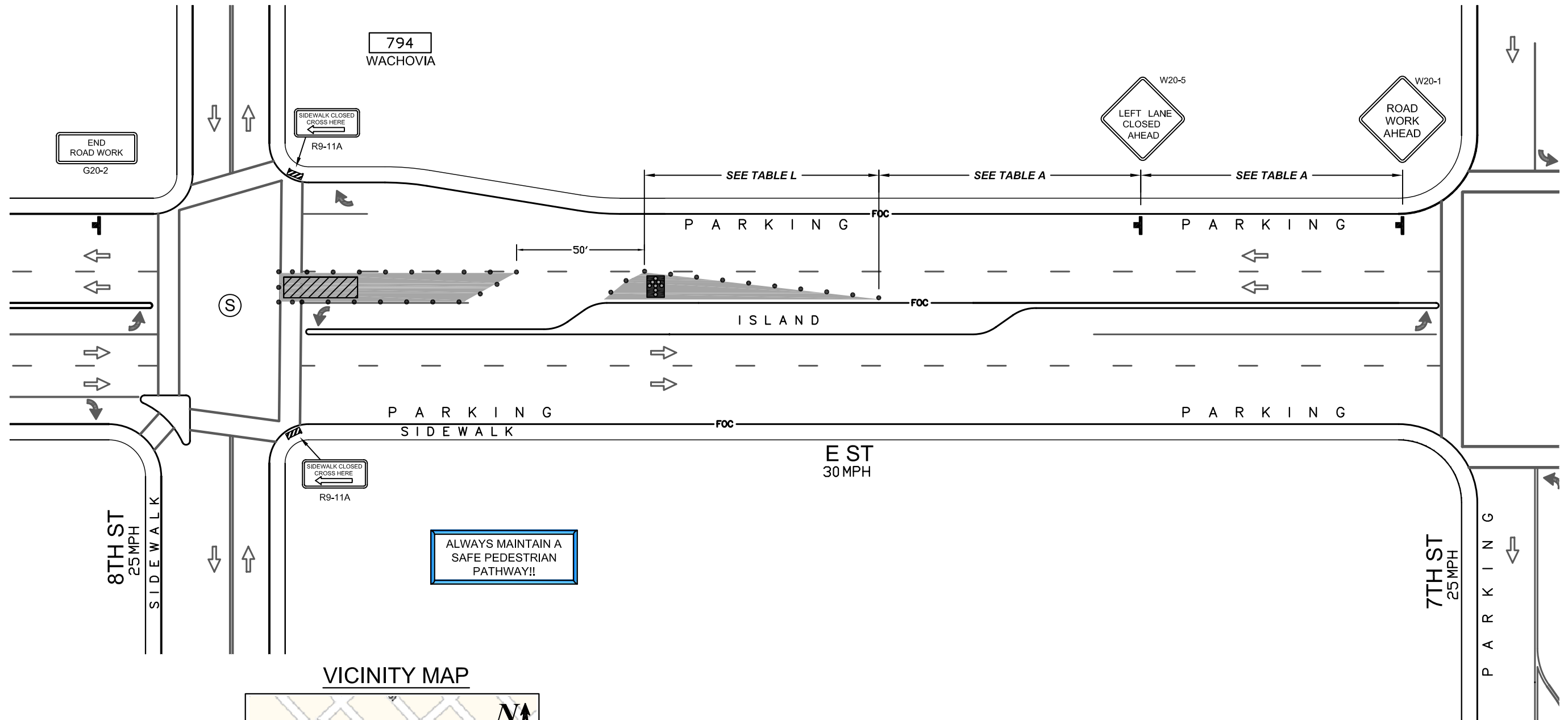


WORKSITE TRAFFIC CONTROL PLAN

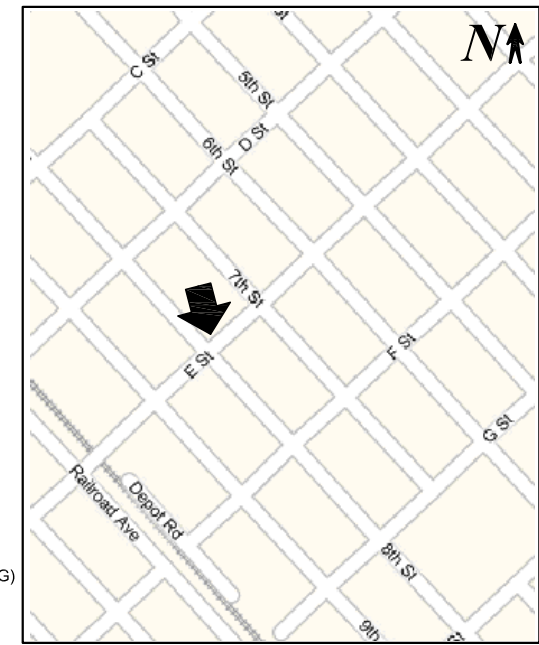
SAMPLE 1

EL CAMINO REAL, SAN LUCAS, CA
 AT X-STREET
 SAN ANTONIO RD

DATE 03/16/07	DRAWING NO.	SCALE NTS
ORIGINAL JOB # E3453	1 OF 1	DRAWN BY D. RAFTER



VICINITY MAP



- LEGEND**
- TYPE II BARRICADE
 - CHANNELIZING DEVICE
 - TRAFFIC CONE WITH CLIP ON SIGN
 - SIGN WITH HIGH LEVEL WARNING DEVICE (FLAGTREE)
 - POST TEMPORARY NO PARKING SIGNS
 - SIGNALIZED INTERSECTION
 - ARROW PANEL (FLASHING ARROW)
 - FLAGMAN
 - WORK ZONE (ACTIVITY AREA) LIMITS
 - PAVEMENT MARKING
 - DIRECTION OF TRAFFIC (NOT PAVEMENT MARKING)
 - ADDRESS

TAPER LENGTHS CALCULATED BY FORMULA FROM CA MUTCD TABLE 6C-4.
 40 M.P.H. OR LESS: $L=WS^2/60$
 40 M.P.H. OR MORE: $L=WS$
 L =TAPER LENGTH(FT) S =POSTED SPEED LIMIT
 W = WIDTH OF OFFSET(FT)

TC SIGNS	
QTY	SIGN
1	FLASHING ARROW BOARD
1	G20-2, END ROAD WORK
2	R9-11, SW CLSD-CROSS HERE
1	W20-1, ROAD WORK AHEAD
1	W20-5, R/L LANE CLOSED

APPROACH SPEED (MPH)	MAXIMUM CHANNELIZER SPACING		
	TAPER (FT)	TANGENT (FT)	CONFLICT (FT)
20	21	42	10
25	26	53	13
30	32	63	15
35	37	74	18
40	42	84	20
45	48	95	23
50	53	106	25
OVER 50	74	148	35

TABLE L				
MINIMUM TAPER LENGTH FOR WIDTH OF OFFSET = 12 FT (3.6m)				
APPROACH SPEED MPH (km/h)	MERGING L FT (m)	MERGING L/2 FT (m)	MERGING L/3 FT (m)	DOWN STREAM FT (m)
20 (30)	80 (21)	40 (10)	27 (7)	100 (30)
25 (40)	125 (37)	63 (19)	42 (12)	100 (30)
30 (50)	180 (58)	90 (29)	60 (19)	100 (30)
35 (60)	245 (84)	123 (42)	82 (28)	100 (30)
40 (70)	320 (158)	160 (79)	107 (53)	100 (30)
45 (80)	540 (180)	270 (90)	180 (60)	100 (30)
50 (90)	600 (203)	300 (101)	200 (68)	100 (30)
55 (100)	660 (225)	330 (113)	220 (75)	100 (30)
60 (110)	720 (248)	360 (124)	240 (83)	100 (30)
65	780	390	260	100
70	840	420	280	100

TABLE A	
APPROACH SPEED (MPH)	RECOMMENDED SIGN SPACING ADVANCE OF TAPER AND BETWEEN SIGNS (FT)
25	150
30	200
35	250
40	350
45	550
50	600
OVER 50	1000

WORKSITE TRAFFIC CONTROL PLAN

SAMPLE 2

E ST, RANCHO CORDOVA, CA
 AT X-STREET
 8TH ST

DATE 03/16/07	DRAWING NO.	SCALE
ORIGINAL JOB # E3451	1 OF 1	NTS
		DRAWN BY D. RAFTER

VICINITY MAP



STOP

MISSION BLVD
35 MPH

STOP



TABLE A	
APPROACH SPEED (MPH)	RECOMMENDED SIGN SPACING ADVANCE OF TAPER AND BETWEEN SIGNS (FT)
25	150
30	200
35	250
40	350
45	550
50	600
OVER 50	1000

F ST
25 MPH

SIDE WALK

G ST
25 MPH

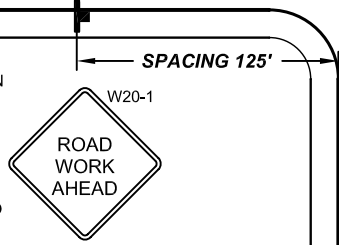


SPACING 125'



LEGEND

- TYPE II BARRICADE
- CHANNELIZING DEVICE
- TRAFFIC CONE WITH CLIP ON SIGN
- SIGN
- SIGN WITH HIGH LEVEL WARNING DEVICE (FLAGTREE)
- POST TEMPORARY NO PARKING SIGNS
- SIGNALIZED INTERSECTION
- ARROW PANEL (FLASHING ARROW)
- FLAGMAN
- WORK ZONE (ACTIVITY AREA) LIMITS
- PAVEMENT MARKING
- DIRECTION OF TRAFFIC (NOT PAVEMENT MARKING)
- ADDRESS



SIDE WALK

2ND ST
25 MPH

STOP

SPACING 125'



SPACING 125'



TC SIGNS	
QTY	SIGN
2	M4-10, ARROW "DETOUR"
1	M4-8A, END DETOUR
3	W20-1, ROAD WORK AHEAD
1	W20-2, DETOUR AHEAD
1	W20-3, ROAD CLOSED AHEAD

WORKSITE TRAFFIC CONTROL PLAN

SAMPLE 3

F ST, SAN LUCAS, CA

AT X-STREET
MISSION BLVD

DATE 03/16/07	DRAWING NO.	SCALE
ORIGINAL JOB # F3453	1 OF 1	NTS
		DRAWN BY D. RAFTER

